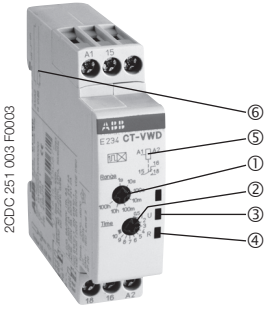


Electronic timer CT-VWD

Impulse-ON with 1 c/o contact

Data sheet



CT-VWD

- ① 7 selectable time ranges, from 0.05 s to 100 h, for the adjustment of the pulse time
- ② Potentiometer with direct reading scale for the fine adjustment of the pulse time
- ③ U: green LED - Supply voltage (LED flashes during timing)
- ④ U: green LED - Supply voltage (LED flashes during timing)
- ⑤ Circuit diagram
- ⑥ Function diagram

Characteristics

- Supply voltage: 24-240 V AC and 24-48 V DC
- Single-function impulse-ON timer
- One device includes 7 time ranges, from 0.05 s to 100 h
- 1 c/o contact
- 2 LEDs for status indication
- Narrow width of only 17.5 mm

Approvals

- cULus
- GOST
- CCC

Marks

- CE
- C-Tick

Order data

Type	Supply voltage	Order code
CT-VWD	24-240 V AC, 24-48 V DC	1SVR 500 130 R0000

Application

With their structural form and their width of 17.5 mm only, the CT-D range timers are ideally suited for installation in distribution cabinets.

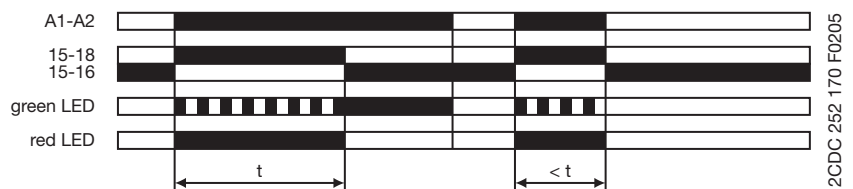
Operating mode

The CT-VWD with 1 c/o contact offers 7 time ranges, from 0.05 s to 100 h. The time delay range is rotary switch selectable on the front of the unit. The fine adjustment of the time delay is made via an internal potentiometer, with a direct reading scale, on the front of the unit.

Function diagram

1. Impulse-ON Interval)

The output relay energizes immediately when supply voltage is applied to terminals A1-A2 and de-energizes after the selected time delay is complete. The green LED flashes during timing. When the time delay is complete, the flashing green LED turns steady. If supply voltage is interrupted before the time delay is complete, the output relay de-energizes and the time delay is reset.



t = adjusted pulse time

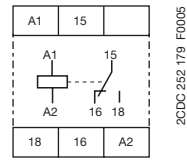
Electronic timer CT-VWD

Impulse-ON with 1 c/o contact

Data sheet

Connection diagram

1  CT-VWD



Version: 1SVR 500 130 R0000
A1-A2 Supply: 24-240 V AC or 24-48 V DC
15-16/18 c/o contact

Electronic timer CT-VWD

Impulse-ON with 1 c/o contact

Data sheet

Technical Data

Input circuits		
Supply voltage	A1-A2	24-240 V AC / 24-48 V DC
Power consumption	24-240 V AC / 24-48 V DC	approx. 0.6-1.3 VA/W
Supply voltage tolerance		-15...+10 %
Supply voltage frequency	DC supply	0 Hz
	AC supply	50/60 Hz
Duty time		100 %
Timing circuit		
Time ranges 0.05 s - 100 h	1)	0.05-1 s
	2)	0.5-10 s
	3)	5-100 s
	4)	0.5-10 min
	5)	5-100 min
	6)	0.5-10 h
	7)	5-100 h
Recovery time		< 50 ms
Repeat accuracy (constant parameters)		< +/- 0.5 %
Timing error within the supply voltage tolerance range		< 0.5 %
Timing error within operating temperature range		< 0.06 % / °C
Indication of operational states		
Supply voltage / timer		green LED steady / flashing while timing
Output relay energized		red LED
Output circuits		
	15-16/18	
Number of contacts		relay, 1 c/o contact
Contact material		AgSnO ₂
Related voltage	acc. to VDE 0110, IEC 60947-1	250 V
Minimum switching voltage		12 V
Maximum switching voltage		250 V AC
Minimum switching current		100 mA
Maximum switching current		6 A
Rated switching current acc. to IEC 60947-5-1	AC-12 (resistive) 230 V	6 A
	AC-15 (inductive) 230 V	3 A
	DC-12 (resistive) 24 V	6 A
	DC-15 (inductive) 24 V	2 A
Maximum lifetime	mechanical	30 x 10 ⁶ switching cycles
	electrical (AC-12, 230 V, 4 A)	0.1 x 10 ⁶ switching cycles
Short circuit proof, max. fuse rating	n/c	6 A fast, operating class gL
	n/o	10 A fast, operating class gL
General data		
Enclosure	width	17.5 mm
	length	70.0 mm
	depth	63.0 mm
Wire size	fine-strand with wire end ferrule	2 x 1.5 mm ²
	fine-strand without wire end ferrule	2 x 2.5 mm ²
	rigid	
Weight		approx. 60 g (2.1 oz)
Mounting position		any
Degree of protection	enclosure / terminals	IP50 / IP20
Temperature	operating	-20...+60 °C
	storage	-40...+85 °C
Mounting		DIN rail (EN 50022), snap-on mounting
Standards		
Product standard		IEC 61812-1 10.1996, EN 61812-1 + A11/8.1999, DIN VDE 0435 Teil 2021
EMC Directive		89/336/EEC
Electromagnetic compatibility		IEC 61000-6-2, EN 61000-6-4
ESD	acc. to IEC 61000-4-2, EN 61000-4-2	level 3 6 kV / 8 kV
HF radiation resistance	acc. to IEC 61000-4-3, EN 61000-4-3	level 3 10 V/m
Burst	acc. to IEC 61000-4-4, EN 61000-4-4	level 3 2 kV / 5 kHz
Surge	acc. to IEC 1000-4-5, EN 61000-4-5	level 4 2 kV L-L

Electronic timer CT-VWD

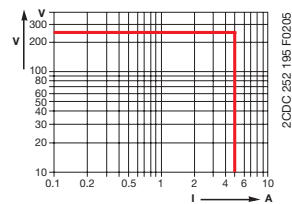
Impulse-ON with 1 c/o contact

Data sheet

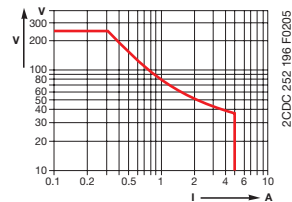
HF line emission	acc. to IEC 1000-4-6, EN 61000-4-6	level 2 10 V
Low Voltage Directive		73/23/EEC
Operational reliability	acc. to IEC 68-2-6	4 g
Mechanical resistance	acc. to IEC 68-2-6	6 g
Approvals / Marks		
Approvals		cULus, GOST and CCC
Marks		CE and C-Tick
Isolation data		
Rated insulation voltage between supply circuit, control circuit and output circuit	acc. to VDE 0110, IEC 60947-1	300 V
Rated impulse withstand voltage between all isolated circuits	acc. to VDE 0110, IEC 664	4 kV / 1.2-50 μ s
Test voltage between all isolated circuits		2.5 kV, 50 Hz, 1 min.
Pollution category	acc. to VDE 0110, IEC 664, IEC 255-5	2
Overvoltage category	acc. to VDE 0110, IEC 664, IEC 255-5	III
Environmental testing	acc. to IEC 68-2-30	24 h cycle time, 55 °C, 93 % rel., 96 h

Load limit curves

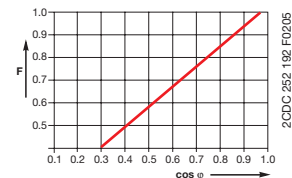
AC load (resistive)



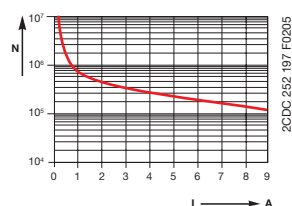
DC load (resistive)



Derating factor F for inductive AC load



Contact lifetime /switching cycles N



220 V 50 Hz 1 AC 360 cycles/h

Electronic timer CT-VWD

Impulse-ON with 1 c/o contact

Data sheet

Dimensional drawings

Dimensions in mm

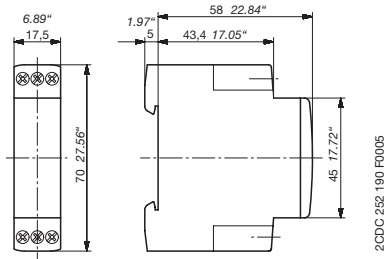




ABB STOTZ-KONTAKT GmbH

Eppelheimer Straße 82 69123 Heidelberg, Deutschland

Postfach 10 16 80 69006 Heidelberg, Deutschland

Internet <http://www.abb.com/lowvoltage> -> Control Products -> Electronic Relays

E-Mail epr-support@stotzkontakt.de